



## OUTRIGGER SPREADS & LOADS

**FRONT**  
Outrigger Spread 27 ft 3 in

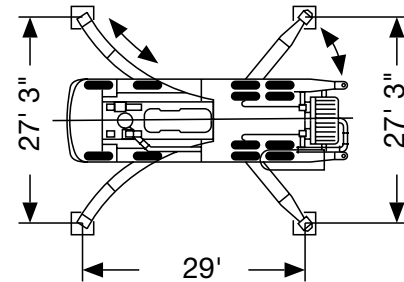
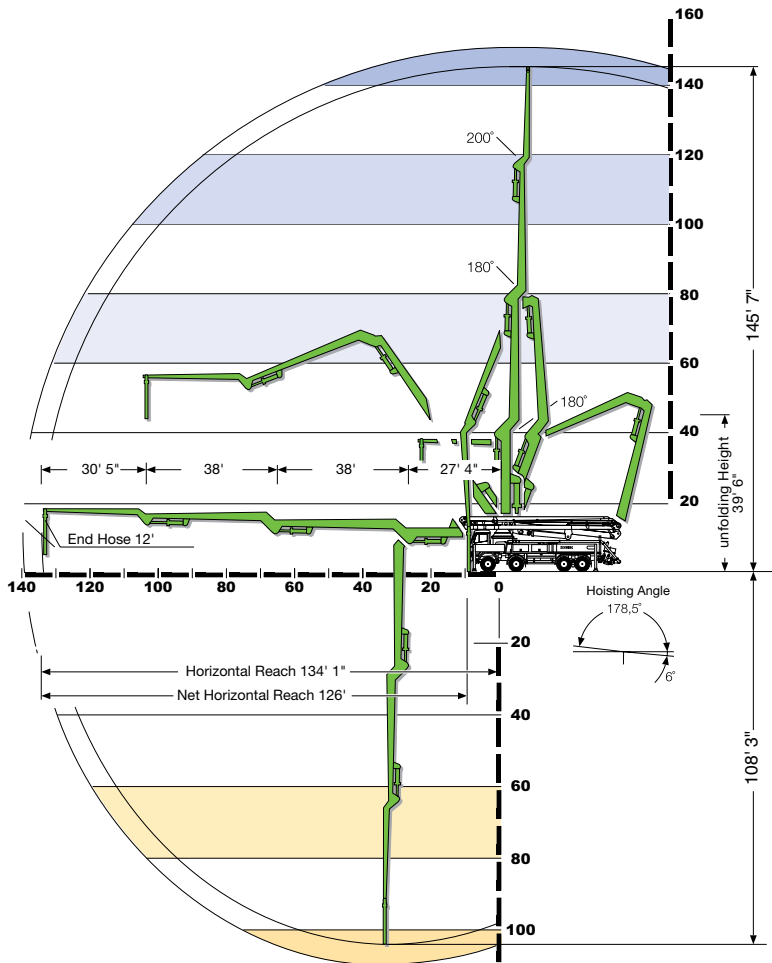
**REAR**  
Outrigger Spread 27 ft 3 in

**FRONT TO REAR**  
Outrigger Length 29 ft 0 in

**MAX FRONT**  
Outrigger Load 58,500 lbf

**MAX REAR**  
Outrigger Load 56,200 lbf

All dimensions and weights are approximate.



Our **Maintenance Program** sets the high standard in the industry. Identifying and correcting issues before they happen is a big part of what keeps your pour on schedule.