

OUTRIGGER SPREADS & LOADS

FRONT
Outrigger Spread 20 ft 4 in

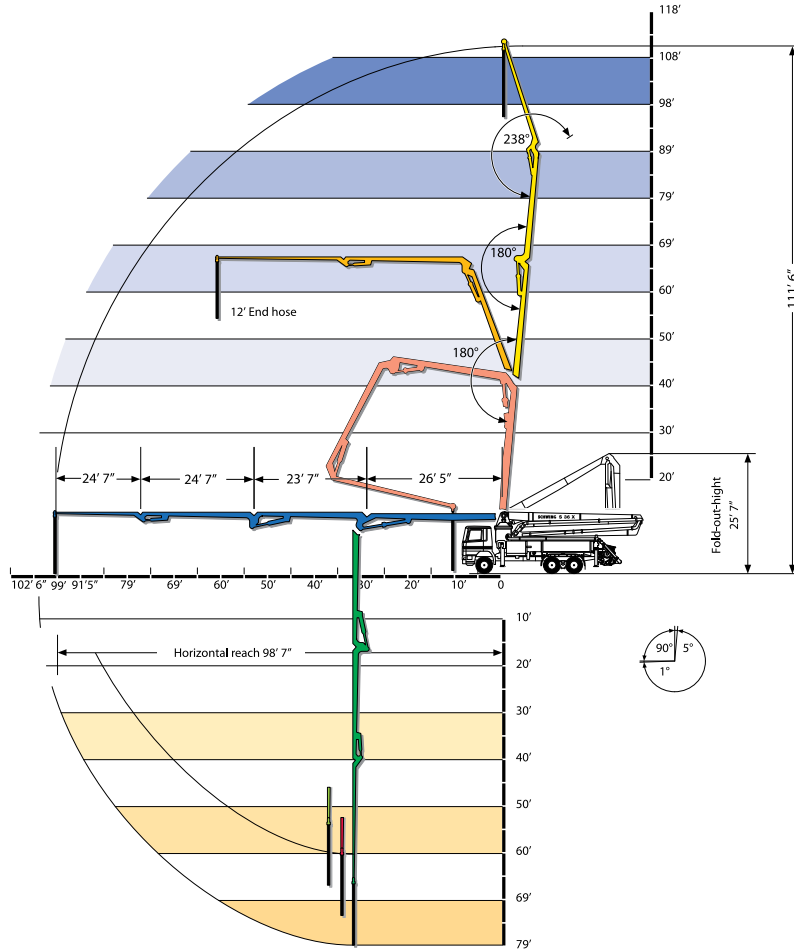
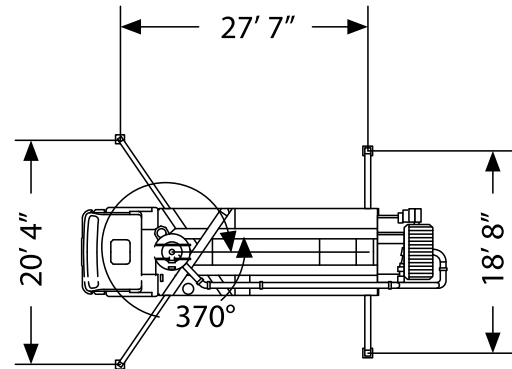
REAR
Outrigger Spread 18 ft 8 in

FRONT TO REAR
Outrigger Length 27 ft 7 in

MAX FRONT
Outrigger Load 42,713 lbf

MAX REAR
Outrigger Load 33,721 lbf

All dimensions and weights are approximate.



We employ a team of **full time Boom Inspectors** that are highly trained to keep up with the demand of inspecting equipment so it's ready for your project.