



## OUTRIGGER SPREADS & LOADS

**FRONT**  
Outrigger Spread 20 ft 8 in

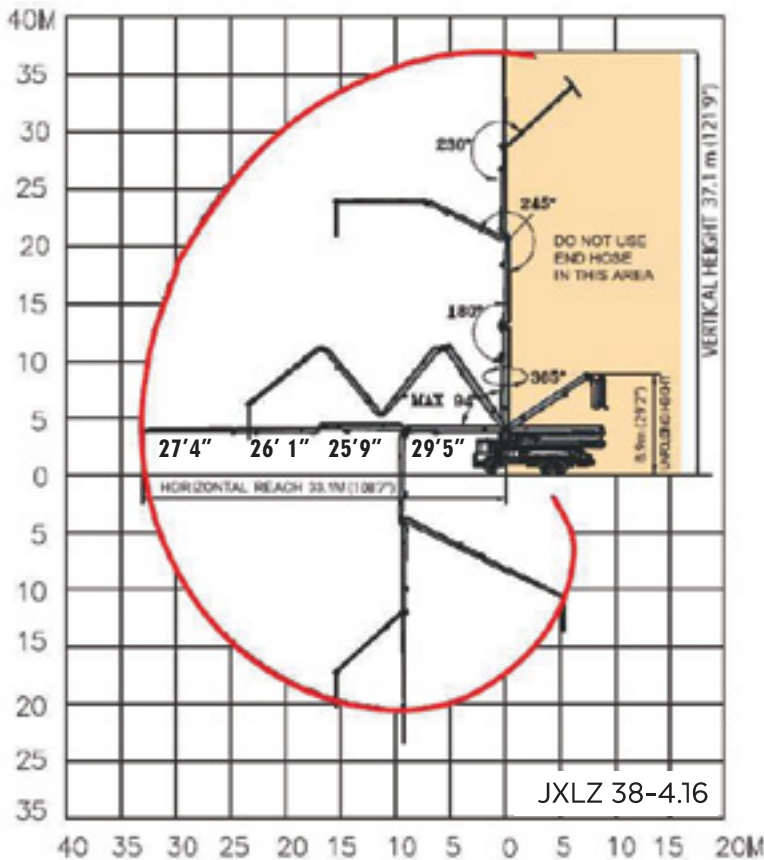
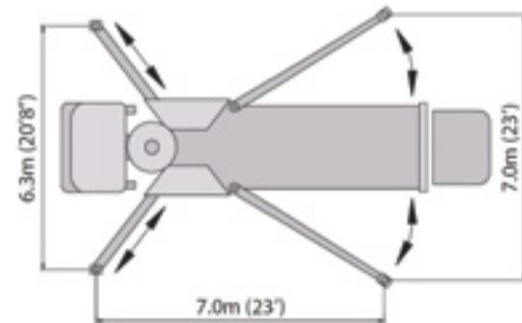
**REAR**  
Outrigger Spread 23 ft 0 in

**FRONT TO REAR**  
Outrigger Length 23 ft 0 in

**MAX FRONT**  
Outrigger Load 37,094 lbf

**MAX REAR**  
Outrigger Load 37,094 lbf

All dimensions and weights are approximate.



We operate the largest fleet of **truck mounted conveyors** in the US, ready to mobilize at any time. Our conveyors are a versatile tool for difficult concrete mixes or specialty placing of aggregates, with a wide range of material handling hoppers.