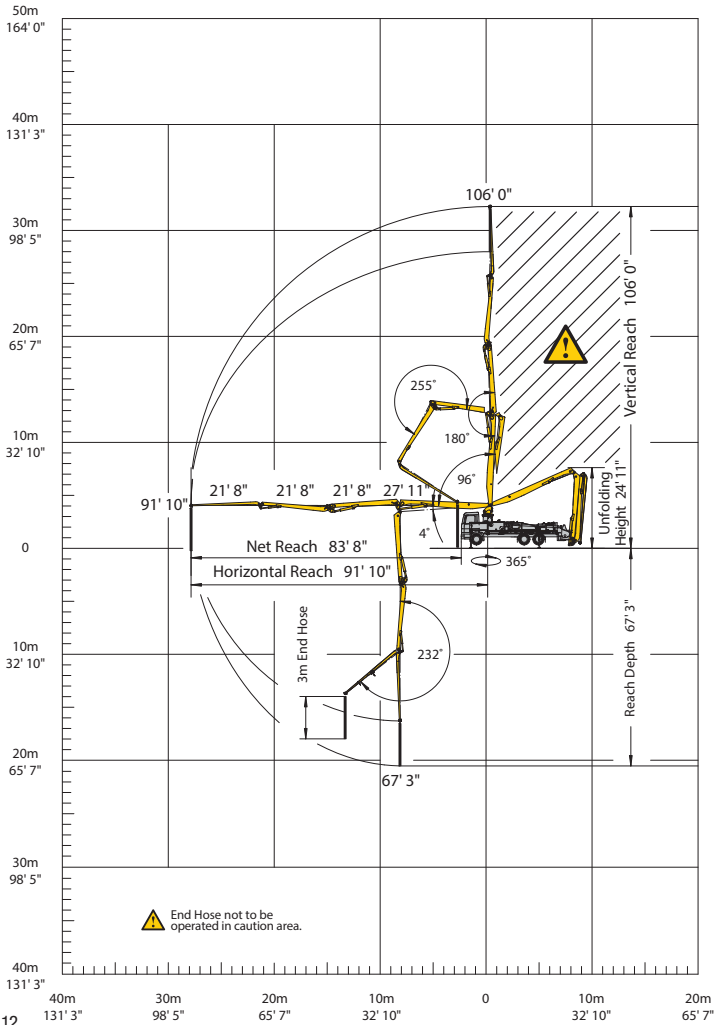


# BSF 32Z



## OUTRIGGER SPREADS & LOADS

**FRONT**  
Outrigger Spread **18 ft**

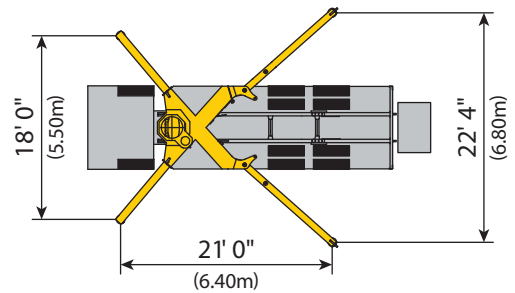
**REAR**  
Outrigger Spread **22 ft 4 in**


**FRONT TO REAR**  
Outrigger Length **21 ft**

**MAX FRONT**  
Outrigger Load **31,473 lbf**

**MAX REAR**  
Outrigger Load **34,845 lbf**

\* All dimensions and weights are approximate.





We manage our fleet age closely, adding new pumps every year, which improves our reliability and reduces your pour time.